

Modern new build townhouses with private pool, terraces and garden next to Santa Catalina



Price

1.500.000 €

Location

Santa Catalina-Son Espanyolet / Palma City / Son Espanyolet

Description

Located in the center of Palma, in the Son Espanyolet area, which has already become an extension of the popular Santa Catalina neighborhood and a short distance from the beautiful historic center and the main shopping streets of the city, the construction of four exclusive semi-detached houses is being carried out under a contemporary design of connected spaces where light circulates freely and the high qualities of the materials used, natural and warm, create elegant and comfortable atmospheres where you can breathe tranquility when you get home.

The houses are developed on three levels with an area of 186 m² and exteriors with terraces, swimming pool, garden and patio that are a real outdoor luxury where you can relax and enjoy the tranquility when you get home and the magnificent climate of the island.

They have three bedrooms with fitted wardrobes, neutral colors and natural materials that create serene environments and three full bathrooms. The spacious living room with dining area and perfectly integrated and equipped kitchen is a large modern and elegant piece that extends to the exterior terraces creating more feeling of spaciousness and letting natural light flood every corner of the room. Moderna

It should be noted that each house includes a parking space for absolute comfort.

-Completion date: second semester 2026

FEATURES:

- Air conditioning hot/cold, central heating, aluminum/climalit, natural stone and wood.
- Open equipped kitchen
- Private terrace, patio, garden, swimming pool and garage.

LOCATION:

-Downtown area, next to restaurants, next to shops, next to schools, five minutes from the Promenade, five minutes from the historic center.

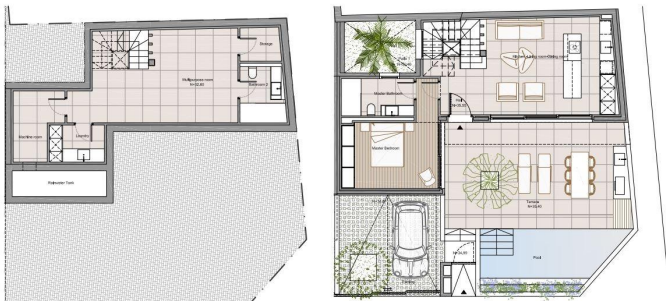
Details

Double room	3
Bathrooms	3
Floors	3
Year of construction	2026
Living space	186

Extras

Air conditioning
Barbecue
Central heating
Heating
Laundry room
Private swimming pool

Photos



BUILT AREA Property A (54)	
BASEMENT	71.88 m ²
GROUND FLOOR	89.27 m ²
FIRST FLOOR	86.22 m ²
TOTAL BUILT AREA	187.37 m²
PARKING UNCOVERED	21.81 m ²
PARKING COVERED	0.00 m ²
POOL	13.96 m ²
TERRACE & GARDEN	13.96 m ²

ESCALA: 1/100
 JUNIO 2023
 PLANO: 1/1

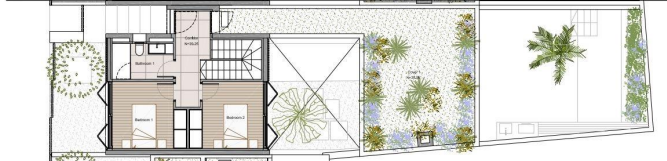


BUILT AREA Property A (54)	
BASEMENT	71.88 m ²
GROUND FLOOR	89.27 m ²
FIRST FLOOR	86.22 m ²
TOTAL BUILT AREA	187.37 m²
PARKING UNCOVERED	21.81 m ²
PARKING COVERED	0.00 m ²
POOL	13.96 m ²
TERRACE & GARDEN	13.96 m ²

ESCALA: 1/100
 JUNIO 2023
 PLANO: 1/1



BUILT AREA Property B (54 a)	
BASEMENT	78.88 m ²
GROUND FLOOR	86.81 m ²
FIRST FLOOR	41.42 m ²
TOTAL BUILT AREA	167.11 m²
PARKING UNCOVERED	13.97 m ²
PARKING COVERED	11.27 m ²
TOTAL PARKING	25.24 m²
POOL	13.96 m ²
WATER FEATURE	7.34 m ²
POOL	13.96 m ²
TERRACE & GARDEN	26.51 m ²



BUILT AREA Property B (54 a)	
BASEMENT	78.88 m ²
GROUND FLOOR	86.81 m ²
FIRST FLOOR	41.42 m ²
TOTAL BUILT AREA	167.11 m²
PARKING UNCOVERED	13.97 m ²
PARKING COVERED	11.27 m ²
TOTAL PARKING	25.24 m²
POOL	13.96 m ²
WATER FEATURE	7.34 m ²
POOL	13.96 m ²
TERRACE & GARDEN	26.51 m ²

